

2010
School Handbook

Western Manitoba
Science Fair

Entries:

Deadline:

The entry deadline for the Western Manitoba Science Fair is March 5, 2010. All communication will be by e-mail with the local school coordinator. When entries are received an initial confirmation e-mail message will be sent. Later, when all the entries are entered into our database, and it is closed and the projects are numbered, another message will be sent showing the entry information for your school. There will also be information for parents and students about timings for the day. At this stage, schools must check the information carefully and report any changes immediately. Within a few days of sending this confirmation, the information starts to flow to other sources to prepare the floor, and all the forms needed for setup and judging. Once this starts, it is very difficult, and sometimes impossible to make changes.

Forms:

There are three or four parts to the entry form. The Project Entry Form gives information about the project name, level, type and division.

Project names should be under 35 letters long. Long names will not print properly on certificates and other lists. Students are disappointed when both ends of their project name is cut off.

Levels are by grades; 1-2, 3-4, 5-6, 7-8, 9-10 and 11-12. Students on Individualized Education Plans or taking modified high school credits are also listed as IEP or MOD. These projects are judged separately and marked accordingly.

Types of projects include individual, group and class. An individual project is done by one student. A group project is two students and a class project is 5 to 15 students from the same classroom, under the direction of a teacher. Class projects are only available to the grade 1-2 level. The teacher of a class project cannot attend the fair during judging, but all students in the project may be there.

See the flow chart on the next page for explanations about the divisions.

The Project Entry Form also requires information about the students involved in the project. Be sure to show both first and last names. T-shirt sizes range from child 6-8 to adult extra large. Only one form per project is needed. Group projects have room for both names. Class projects will have to attach a list of students with the appropriate information.

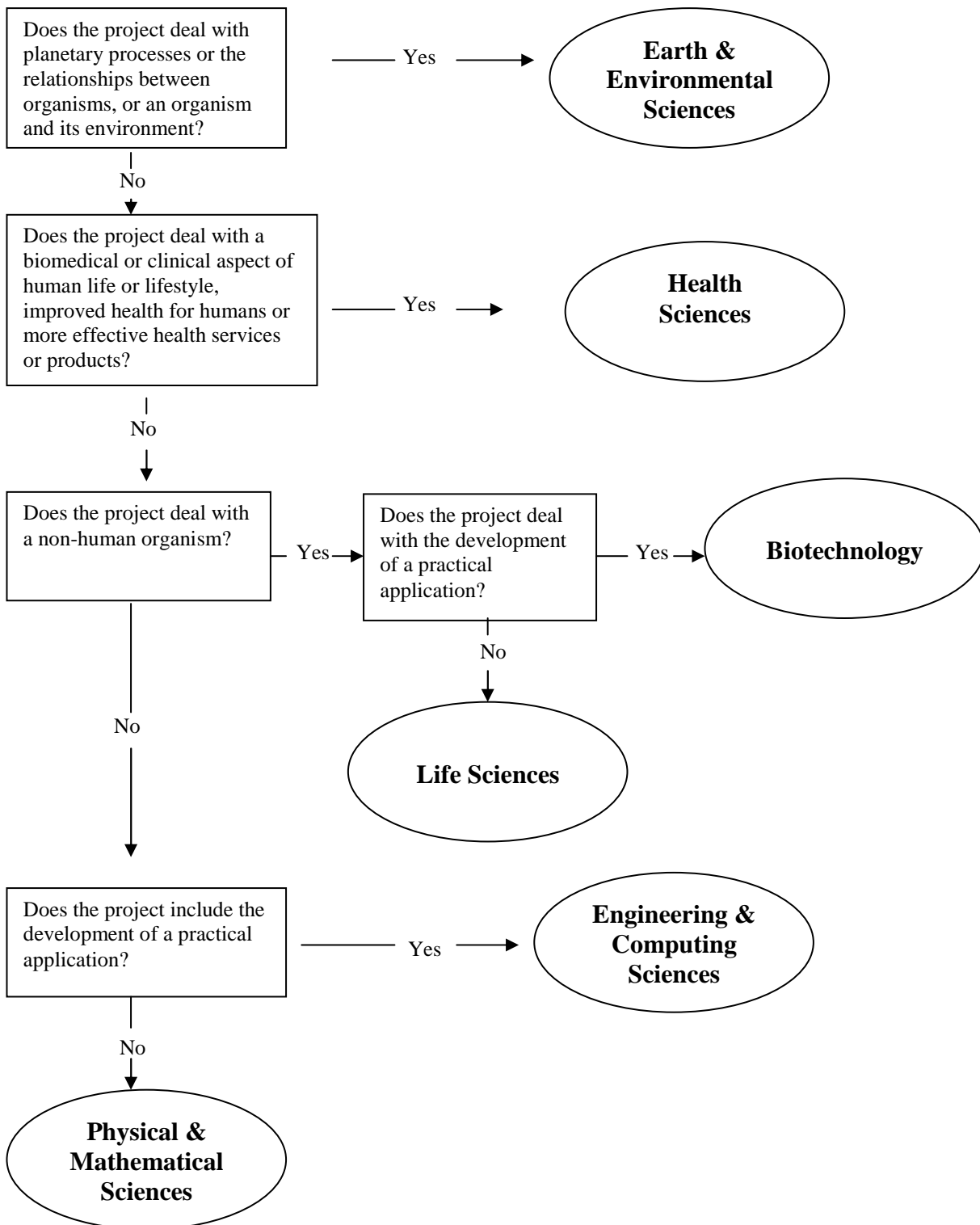
A separate form involves self-nominated awards. Some sponsors provide awards with very specific criteria. The list provided is from the previous year. If there are any last minute additions or deletions, the committee will adjust the entries. Please nominate yourself by checking the appropriate line. The science fair committee has very little control over the

types of awards that sponsors want to give. Many students will find that they are not eligible for any special awards.

The third type of form is a Registration Summary. Schools must complete this form. The e-mail address for contact is absolutely crucial. After the money summary is completed, the school must send one cheque for the whole amount. Please have students write their cheques to the school, not the Western Manitoba Science Fair. Home school students, and others entering without coming from a school fair, must also send a Registration Summary.

Students in the levels 7-8, 9-10 and 11-12 must also attach a one-page abstract of their project to their entry form. This abstract will be given to judges before they see the project. It is a very important part of the judging process. A summary on the project will not count as an abstract. For more information on writing an abstract, see the information on the web site.

Project Divisions



Judging:

There are three levels of judging forms available. These forms may be used in school fairs. Blank forms should also be available for students to use to prepare for the judging process.

At the Western Manitoba Science Fair judges use the forms for the first round of judging only. They will then meet in judging teams and rate the projects they are judging. Not all judges in the team will necessarily mark all the projects. They then rank the projects and decide on any medals to be awarded. After judging is completed they will fill in a comment sheet on each project. The schools will receive the comment sheets only. A teacher from the school may pick them up after the awards ceremony.

Safety:

Please be sure that projects meet the safety and size requirements. We have been especially concerned about live animals and biohazards in the last number of years. Projects involving plants are sometimes safe, but the time between the school fair and regional fair is usually hard on the display material. It is probably safer and wiser to use pictures rather than live plants in the display. The judges will not fault any project that uses pictures in this way.

There is a safety checklist on the next two pages.

Safety Check List

Name(s):

Title:

Project #:

AREA

SPECIFICS

PASSED OR CONCERN

Dimensions

Entire exhibit does not exceed 1.2 m wide x 0.8 m deep x 2.0 m high

Backboard Materials

Panels decorated with paper that is securely applied so that minimal air pockets are left behind the paper

Overlapping or loose sheets of paper are stored in a data book

General

Exhibit is sturdy and self supporting

Moving parts such as belts, pulleys and propeller blades are guarded

All sharp edges or corners on prisms, mirrors, enclosures, and glass/metal plates are removed or protected

No pressurized gas cylinders

No firearms or ammunition

Fire

Combustible materials are away from heat sources

No flammable liquids or open flames

Chemical

Substitutes used are labeled as 'simulated'

Electrical

Electrical appliances are CSA approved or have 3-wire conductor with ground

Exposed live parts are less than 36 volts; current (amperage) is low so as not to cause discomfort or danger if touched

Non-current carrying metal parts are grounded

Wet cells are not on display

X-Rays or Radiation

Registration of ownership with student's provincial government

All voltages used are less than 10 kV

Bio-hazards

Radio-isotopes or compounds containing radio-isotopes are below normal background

Biological toxins or micro-organisms are not on display

Cells or tissues infected with animal or plant viruses are not on display

Bacterial cultures are completely sealed or use photographs only.

Plant/soil/materials which could decompose are not on display

Approved:

Date: _____